

REVIEW

Open Access

Ketone bodies: from enemy to friend and guardian angel



Hubert Kolb^{1,2}, Kerstin Kempf^{2*}, Martin Röhling², Martina Lenzen-Schulte³, Nanette C. Schloot¹ and Stephan Martin^{1,2}

Abstract: During starvation, fasting, or a diet containing little digestible carbohydrates, the circulating insulin levels are decreased. This promotes lipolysis, and the breakdown of fat becomes the major source of energy. The hepatic energy metabolism is regulated so that under these circumstances, ketone bodies are generated from β -oxidation of fatty acids and secreted as ancillary fuel, in addition to gluconeogenesis. Increased plasma levels of ketone bodies thus indicate a dietary shortage of carbohydrates. Ketone bodies not only serve as fuel but also promote resistance to oxidative and inflammatory stress, and there is a decrease in anabolic insulin-dependent energy expenditure. It has been suggested that the beneficial non-metabolic actions of ketone bodies on organ functions are mediated by them acting as a ligand to specific cellular targets. We propose here a major role of a different pathway initiated by the induction of oxidative stress in the mitochondria during increased ketolysis. Oxidative stress induced by ketone body metabolism is beneficial in the long term because it initiates an adaptive (hormetic) response characterized by the activation of the master regulators of cell-protective mechanism, nuclear factor erythroid 2-related factor 2 (Nrf2), sirtuins, and AMP-activated kinase. This results in resolving oxidative stress, by the upregulation of anti-oxidative and anti-inflammatory activities, improved mitochondrial function and growth, DNA repair, and autophagy. In the heart, the adaptive response to enhanced ketolysis improves resistance to damage after ischemic insults or to cardiotoxic actions of doxorubicin. Sodium-dependent glucose co-transporter 2 (SGLT2) inhibitors may also exert their cardioprotective action via increasing ketone body levels and ketolysis. We conclude that the increased synthesis and use of ketone bodies as ancillary fuel during periods of deficient food supply and low insulin levels causes oxidative stress in the mitochondria and that the latter initiates a protective (hormetic) response which allows cells to cope with increased oxidative stress and lower energy availability.

Keywords: Ketogenic diet, Ketone bodies, Beta hydroxybutyrate, Insulin, Obesity, Type 2 diabetes, Inflammation, Oxidative stress, Cardiovascular disease, SGLT2, Hormesis

* Correspondence: kerstin.kempf@wdgz.de

²West-German Centre of Diabetes and Health, Duesseldorf Catholic Hospital Group, Hohensandweg 37, 40591 Duesseldorf, Germany

Full list of author information is available at the end of the article



© The Author(s). 2021 **Open Access** This article is licensed under a Creative Commons Attribution 4.0 International License, which permits use, sharing, adaptation, distribution and reproduction in any medium or format, as long as you give appropriate credit to the original author(s) and the source, provide a link to the Creative Commons licence, and indicate if changes were made. The images or other third party material in this article are included in the article's Creative Commons licence, unless indicated otherwise in a credit line to the material. If material is not included in the article's Creative Commons licence and your intended use is not permitted by statutory regulation or exceeds the permitted use, you will need to obtain permission directly from the copyright holder. To view a copy of this licence, visit <http://creativecommons.org/licenses/by/4.0/>. The Creative Commons Public Domain Dedication waiver (<http://creativecommons.org/publicdomain/zero/1.0/>) applies to the data made available in this article, unless otherwise stated in a credit line to the data.

Background

In recent reviews, we have described the role of elevated endogenous insulin levels in the development of obesity and arteriosclerosis [1, 2]. The pathophysiological mechanisms of hyperinsulinemia are numerous as increased tubular sodium reabsorption or unfavorable effects on lipid metabolism. Reduction of endogenous insulin secretion leads to increased breakdown of fatty acids which will be discussed in this review.

Fat has turned out to be a superior form of energy reserve because more energy can be stored per weight and volume, and no additional water is required for maintaining solubility and conformation. Glycogen has a glucose to water ratio of 1:2 (weight/weight) and therefore contains about 7 times less calories per weight than fat. In the human body, glycogen stored in the muscle is primarily consumed locally during muscle work. Glucose stored as liver glycogen (80–100 g in adults) may be released into the bloodstream, but this is insufficient to maintain normal body functions for more than a day but may last for a few days because of concurrent gluconeogenesis. By contrast, energy stored as fat in adipose tissue and ectopic sites may provide energy for weeks. There are no protein stores; muscle fibers serve as the primary source of amino acids for energy production [3].

The lack of food therefore leads to the preferential breakdown of fat, with a major contribution of increased lipolysis because of lowered insulin levels. When most of the glucose in glycogen stores is used up, digestion of fatty acids in the liver is upregulated, but under these circumstances, energy metabolism hardly can proceed beyond the generation of acetyl-CoA. This is due to the limited availability of oxaloacetate for oxidation in the tricarboxylic acid (TCA) cycle in hepatocytes because of its consumption during concurrent gluconeogenesis. Accumulation of acetyl-CoA is resolved by its conversion to acetoacetate, the majority of which is reduced to D- β -hydroxybutyrate (β OHB); another part spontaneously decarboxylates to acetone. These three “ketone bodies” are released into circulation and taken up by other tissues, including the brain and heart, as an alternative source of energy [4–6]. An increase of the systemic level of ketone bodies thus indicates conditions of limited food supply, or at least limited dietary carbohydrate availability. We therefore discuss here that ketone bodies not only substitute for glucose as an external source of energy but also support the body in adapting to periods of limited food supply.

Main text

Metabolic conditions causing ketosis

Ketosis is caused by the preferential breakdown of fats for energy production, resulting in ketone body formation in the absence of sufficient carbohydrate (sugars or

starches, glycogen) availability leading to low systemic insulin levels.

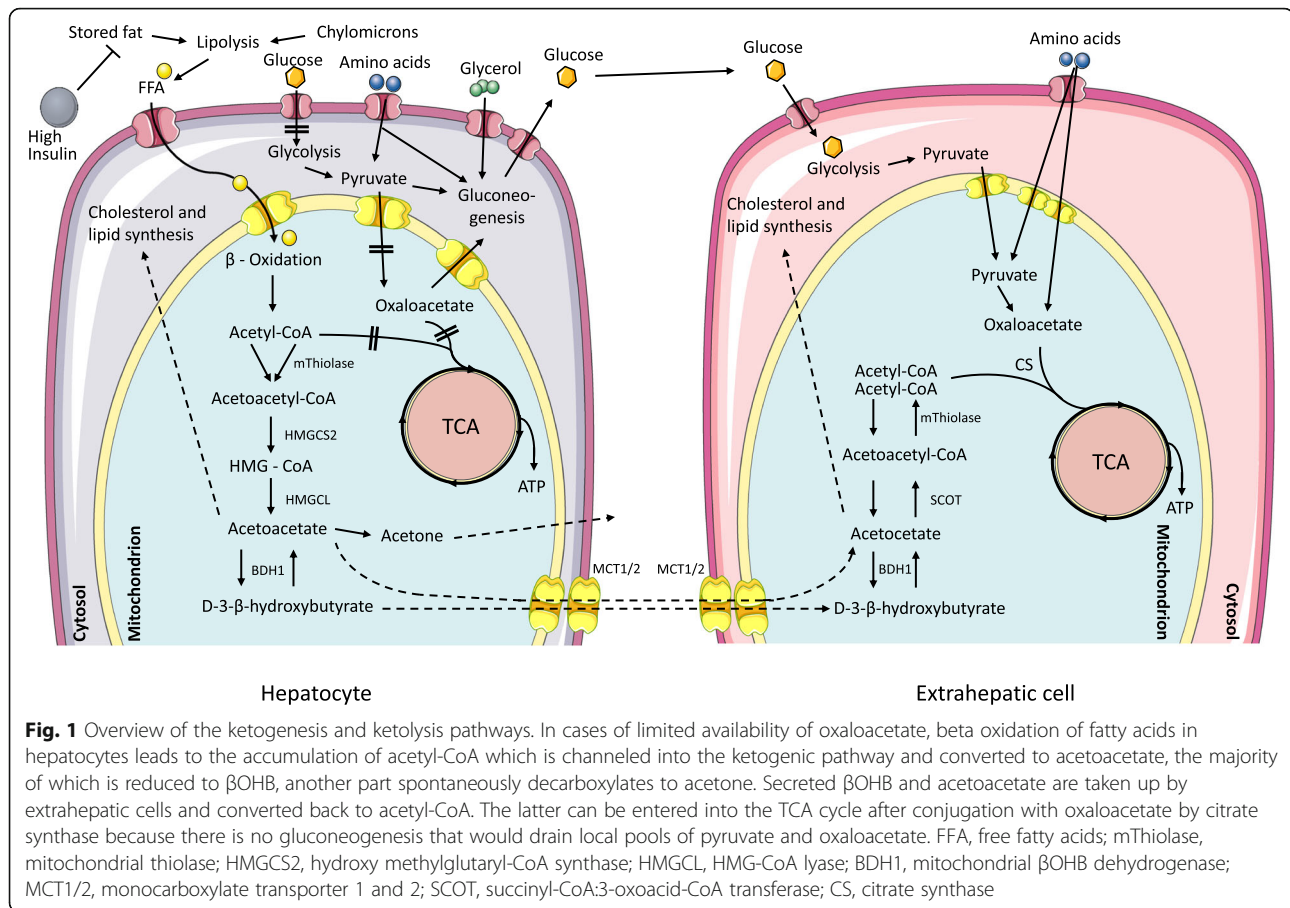
Reasons for ketosis include the following:

- (a) Energy production preferentially from body fat reserves because of insufficient energy supply from dietary sources including digestible carbohydrates less than 5–10% of daily required energy (voluntary or during famine). The resulting decrease of insulin levels to the low normal range allows enhanced lipolysis. Such a situation may also occur during prolonged exercise. A normal blood glucose level is maintained by hepatic gluconeogenesis.
- (b) Energy production preferentially from dietary rather than body fat but not from dietary carbohydrates because of very low digestible carbohydrates (daily max. 25–50 g for adults, “ketogenic diet”) in diets which are not restricted for the content of fat or protein (ketogenic diet, very low carbohydrate diet, paleolithic diet, low insulin diet). A normal blood glucose level is maintained by hepatic gluconeogenesis.
- (c) Persons with diabetes type 1 (rarely type 2): Preferential energy production from dietary or body fat but not from dietary carbohydrates, because of insufficient ability to use blood glucose as an energy source because of too low insulin levels or very high insulin resistance such as during infections. A normal blood glucose level cannot be maintained because of the influx of glucose from dietary sources and/or the liver but decreased insulin-dependent efflux from the blood and lymph into tissues, resulting in hyperglycemia. In non-diabetic persons, endogenous glucose production from the liver usually is suppressed by the postmeal rise of blood insulin levels.

Generation of ketone bodies and their metabolism

Energy production from fat requires the release of free fatty acids from triglycerides deposited in body fat stores or from dietary fat in chylomicrons or other triglyceride-rich lipoproteins [7, 8]. The release of fatty acids from adipocytes requires low insulin activity because this anabolic hormone is a potent inhibitor of lipolysis [1]. Free fatty acids in the plasma are taken up by most cell types for energy production, but primarily, hepatocytes can use them to generate ketone bodies for distribution as an alternative fuel to other cell types of the body if there is a lack of diet-derived glucose (Fig. 1).

Breakdown of fatty acids occurs in the mitochondria by beta oxidation yielding ATP and acetyl-CoA. In the absence of sufficient glycolysis-derived oxaloacetate plus the consumption of oxaloacetate for gluconeogenesis, and because of additional not well-researched metabolic



factors, hepatocytes channel only little acetyl-CoA into the TCA cycle for terminal oxidation and further ATP production [6]. Rather, acetyl-CoA accumulates and is converted to acetoacetate via acetoacetyl-CoA (by mitochondrial acetoacetyl-CoA thiolase) and hydroxy methylglutaryl-CoA (by HMG-CoA synthase) from which acetoacetate and acetyl-CoA are cleaved (by HMG-CoA lyase). A small proportion of acetoacetate spontaneously decarboxylates to acetone and CO_2 , and a larger part is reduced to β OHB (by mitochondrial β OHB dehydrogenase, BDH1). The three “ketone bodies” (acetoacetate, β OHB, acetone) are secreted to the venous circulation, followed by uptake in extrahepatic tissues, excretion in the kidney, or exhaling (acetone) via the lungs. Acetoacetate may also be used in the cytosol for cholesterol synthesis and possibly lipogenesis [6, 9] (Fig. 1). The term ketone body usually includes β OHB, although its keto group is reduced to a hydroxyl group.

Significant amounts of ketone bodies are also produced during a non-ketogenic diet, leading to blood levels of around 0.05 mmol/l for acetoacetate, 0.05–0.4 mmol/l for β OHB, and 0.02–0.05 mmol/l for acetone. The levels vary over the day, decreasing with the uptake of carbohydrates and increasing in periods between

meals or because of prolonged muscle work. After 2 weeks of fasting, levels of acetoacetate may reach 1 mmol/l and that of β OHB 5 mmol/l. Acetone concentrations in the blood may increase to 0.5 mmol/l [10–12]. A small fraction of ketone bodies reach the urine and can be reabsorbed to some degree, proportionate to circulating concentrations.

The uptake of acetoacetate and β OHB into the mitochondria of extrahepatic tissues follows a concentration gradient via monocarboxylate transporters 1 and 2. The use of ketone bodies for energy production is limited to extrahepatic tissues and is initiated by the oxidation of β OHB back to acetoacetate by mitochondrial BDH1. Acetoacetate is in equilibrium with acetoacetate-CoA via succinyl-CoA:3-oxoacid-CoA transferase (SCOT), and acetoacetate-CoA is cleaved by mitochondrial acetoacetyl-CoA thiolase yielding two molecules of acetyl-CoA. The latter are conjugated with oxaloacetate (from glucose or amino acid catabolism) by citrate synthase to enter the TCA cycle or may be used for lipid synthesis [6] (Fig. 1). Hepatocytes cannot use ketone bodies for energy production because of the lack of SCOT which prevents ketolysis and futile cycling of acetoacetate back to HMG-CoA.

Role of ketone bodies in energy homeostasis

Ketogenesis and the use of ketone bodies for energy production occur in most extrahepatic tissues including the brain (excluding erythrocytes and most malignant cell types). There is a major advantage from an evolutionary point of view because the ability to survive periods of starvation is substantially augmented. In the absence of ketogenesis, brain cells would entirely depend on hepatic and renal gluconeogenesis during long-term starvation. Substrates for glucose synthesis are limited in the body; they include glucogenic amino acids, glycerol from triglycerides, recycled lactate, and pyruvate via the Cori cycle (and ketone bodies). It has been calculated that the brain of an adult person might survive 2–3 weeks from gluconeogenesis alone but remains functional for at least 2 months if ketone bodies derived from fat depots are being used as an additional energy source. An obese person could even withstand a much longer period of starvation. After several weeks of fasting, two-thirds of the energy needed by the brain are provided by β OHB and acetoacetate [10]. The human brain also requires ketone bodies during the early postnatal phase. The metabolism of newborns is ketotic due to the low lactose content of colostrum. Nearly half of the energy consumed by the newborn human brain is from β OHB. After a few days of lactation, the lactose content has increased, and ketosis disappears [10, 13].

Another organ critical for survival is the heart. Interestingly, myocardial cells make little use of glucose for energy production but strongly rely on the oxidation of fatty acids which accounts for 60–85% of ATP produced. Additional energy substrates include glucose/lactate, ketone bodies, and amino acids [14, 15]. The use of acetoacetate and β OHB is proportionate to systemic levels so that there is increased consumption of ketone bodies during ketosis although free fatty acids remain the major substrate for ATP production [6].

The contribution of acetoacetate and β OHB to ATP production in the skeletal muscle varies substantially. After an overnight fast, ketone bodies contribute 10–20% to energy provision which may rise to 50% after several days of starvation. More than half of the energy comes from blood glucose [15, 16]. The disposal of ketone bodies to the skeletal muscle during aerobic exercise may rise up to fivefold, followed by post-exercise ketosis (0.3–2.0 mmol/l) depending on nutritional status and exercise intensity [17].

Taken together, the liver continuously produces low levels of ketone bodies during lipid catabolism, with a rapid increase in response to decreased availability of diet-derived glucose/pyruvate for channeling breakdown products of fatty acids into the TCA cycle for complete oxidation (Table 1). The ability of acetoacetate and β OHB to substitute for blood glucose in energy

Table 1 Ranges of ketone body levels in human plasma in different physiological conditions

Physiological condition	β -Hydroxybutyrate concentration in plasma (range in mmol/l)
Normal circadian variation	0.1–0.4
After prolonged exercise	0.3–2
After 1–2 days of fasting	1–2
After 2–3 weeks of fasting	5–7
After 1–3 weeks of ketogenic diet	0.5–5
During diabetic ketoacidosis	3–25

production is essential for survival during prolonged starvation, in particular, in regard to brain function.

Ketone bodies as a guardian angel

There may be a broader role of ketogenic diets in protecting body functions than simply causing less production of insulin and providing ketone bodies as alternative ancillary fuel. A rise of ketone body levels in the blood is indicative of fat breakdown in the absence of sufficient carbohydrate availability and the resulting low insulin secretion, for instance, during food shortage. Therefore, an increase of the systemic levels of acetoacetate or β OHB could be used by the body as a danger signal indicating risk of starvation followed by an appropriate response to modulate physiological mechanisms of relevance for improving survival during starvation. This chapter will discuss such a scenario.

During food shortage or starvation, the increased energy production from ketone bodies is associated with enhanced radical oxygen species (ROS) release in the mitochondria, a concomitant decrease of NADH in favor of NAD⁺ levels and a lower AMP/ATP ratio [18–21]. The enhanced production of ROS is also seen when exposing rat hepatocytes or human endothelial cells to acetoacetate [22, 23]. Markers of oxidative stress were also induced in bovine hepatocytes by β OHB or acetoacetate [24, 25]. In addition to increased ROS production from the mitochondria, NADPH oxidase 4 is activated in human endothelial cells by high concentrations of acetoacetate (4 mmol/l) and β OHB (12 mmol/l) [26]. Oxidative stress usually is accompanied by or leads to the activation of inflammatory reactivity and to cell damage at the level of lipids, proteins, and DNA. Indeed, β OHB was found to induce the pro-inflammatory cytokines tumor necrosis factor- α (TNF α) or interleukin (IL)-1 β and IL-6 as well as the chemokine CCL2 in human microvascular endothelial cells or calf hepatocytes [24, 27].

In view of such undesired consequences for cell physiology, it seems counterintuitive to consider ketosis and ketone bodies as beneficial to the organism. However, the above findings are contrasted by a large number of

reports which link feeding a ketogenic diet or exposure to ketone bodies to the upregulation of anti-oxidant and anti-inflammatory mechanisms (reviewed in [6, 9, 28]). These seemingly controversial findings are resolved when considering that there is a time axis in the response to ketogenic diets or exogenous ketone bodies. The initial rise of ROS and pro-inflammatory mediators is followed by an adaptive cellular defense response which leads to prolonged upregulation of cell-protective activities including increased anti-oxidative and anti-inflammatory activity, cell repair, and regeneration mechanisms. These cellular responses are mediated by several danger-responsive regulatory molecules including the nuclear factor erythroid 2-related factor 2 (Nrf2), histone deacetylases of the sirtuin (SIRT) family, and AMP-activated kinases (Fig. 2).

The experimental evidence that ketone bodies need to first impair mitochondrial function before causing a beneficial response is mostly derived from animal models or cell culture. In rats, a ketogenic diet was found to enhance the production of H₂O₂ from the brain mitochondria accompanied by a decrease of glutathione levels in the liver. However, in subsequent weeks, hydrogen peroxide levels decreased below control. This adaptive response was carried by the accumulation of

Nrf2 in the cell nuclei leading to the production of Nrf2-responsive targets such as NAD(P)H:quinone oxidoreductase and heme oxygenase 1 [29]. In a rat model of spinal cord injury, ketogenic diet induced the activation of Nrf2 which led to the attenuation of inflammation by decreasing the expression of nuclear factor “kappa-light-chain-enhancer” of activated B cells (NF-kB) expression and of pro-inflammatory cytokines IL-1β, TNFα, and interferon-γ (IFNγ) as well as by enhancing superoxide dismutase and decreasing myeloperoxidase activity [30]. The decreased activation of the NOD-, LRR- and pyrin domain-containing protein 3 (NLRP3) inflammasome in human monocytes or mice after treatment with βOHB [31] may also be the result of suppressed NF-kB activity. Pretreatment of human endothelial cells with ketone bodies for 48 h caused an adaptive response which prevented the oxidative damage seen after subsequent exposure to 4 mmol/l βOHB plus 1 mmol/l acetoacetate in controls. The protective effect of pretreatment with ketone bodies apparently was mediated by activation of Nrf2 [32]. Feeding rats a ketogenic diet or exogenous βOHB rendered the retina resistant to ischemic degeneration. Treatment with βOHB did not add to the protective effects of the ketogenic diet suggesting that cell protection by ketogenic diet was mediated by diet-

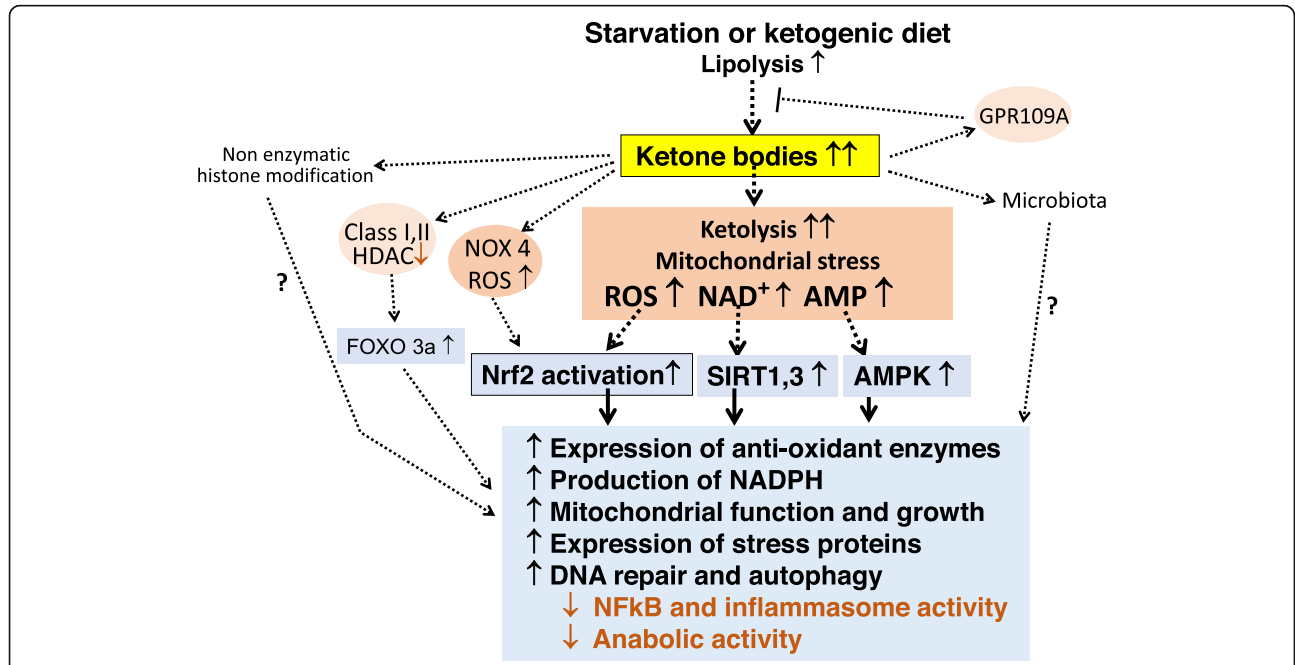


Fig. 2 Scheme of cell-protective functions of ketone bodies. The metabolic shift towards fat oxidation and ketolysis during starvation or ketogenic diet is associated with mitochondrial stress characterized by increased levels of ROS and increased ratios of NAD⁺/NADH and AMP/ATP as well as AMP/ADP. These “danger signals” cause a protective adaptive (hormetic) cellular response, via the activation of Nrf2, SIRT1, SIRT3, and AMPK, respectively. Ketone bodies also activate ROS production from NOX4, and βOHB alters the gene expression pattern by promoting histone acetylation via inhibiting class I and II HDACs and possibly by direct β-hydroxybutyrylation of histones. Long-term consequences of the initial moderate metabolic stress include upregulation of anti-oxidative and anti-inflammatory activities and improved mitochondrial function. ROS, radical oxygen species; Nrf2, nuclear factor erythroid 2-related factor 2; SIRT, sirtuin, silent information regulator; AMPK, AMP-activated kinase; NFkB, nuclear factor kappa B; NOX, NADPH oxidase; HDAC, histone deacetylase; FOXO, forkhead box O

induced ketone bodies. The diet as well as β OHB supplementation caused activation and nuclear translocation of Nrf2. Its causal role in rendering retina cells resistant to ischemic stress was proven by the loss of such protective effect when the Nrf2 gene was inactivated [33]. Feeding a calorie-restricted diet to mice also caused activation of Nrf2 and the expression of anti-oxidant enzymes; no such response was seen in mice with a disrupted Nrf2 gene [34]. Interestingly, the lifespan-extending property of a calorie-restricted diet in *Caenorhabditis elegans* was also lost in the absence of a functioning Nrf2//SKINhead (SKN)-1 gene [35].

Taken together, ketone bodies appear to initially induce the production of excess ROS from the mitochondria which causes the induction of Nrf2, the master regulator of several hundred genes involved in cell protection, repair, and regeneration including DNA repair, autophagy, decreased endoplasmic reticulum stress, and improved mitochondrial function and growth but otherwise reduced anabolic activities to protect energy reserves [36–38]. Several pathways may lead to Nrf2 activation, i.e., translocation to the nucleus and binding to anti-oxidant/electrophile response elements in the promoter region for enhanced gene expression [39–41]. Of these, the major pathway involves the interaction of ROS with lysine residues of KEAP which blocks its ability to bind and deliver newly synthesized Nrf2 to the proteasomal degradation route (Fig. 2).

Since starvation is a life-threatening situation, it is not surprising that β OHB probably employs more than one pathway of dealing with the consequences of food shortage. Closely associated with the production of increased ROS from mitochondria leading to the activation of Nrf2 is a decrease in the NAD^+/NADH ratio which causes the activation of NAD-dependent histone deacetylase sirtuins 1 and 3. These enzymes promote the enhanced expression of a set of genes also involved in anti-oxidant and anti-inflammatory activities as well as supporting autophagy, mitochondrial function, and growth, partially overlapping with the gene set activated by Nrf2 [42, 43]. A further important activity of sirtuin 3 is the deacetylation and activation of the NADP-dependent isocitrate dehydrogenases in the mitochondria and cytoplasm leading to increased NADPH production for efficient neutralization of lipid peroxides [9]. Evidence for the induction of sirtuin 3 by β OHB comes from studies of forebrain neurons [44]. In vivo, supplementing β OHB increased sirtuin 3 and mitochondrial respiration in the hippocampus of mice [45]. Concomitantly, there was reduced oxidative stress and decreased infarct volume after ischemic stroke [46]. Sirtuin 1 enzyme activity was found to be increased in murine hippocampal neurons when incubated with β OHB which also caused improved mitochondrial respiration [47].

The third sensor of energy homeostasis is the AMP/ATP (and AMP/ADP) ratio. Cells respond to a lower ATP level with upregulation of AMP-activated kinase(s) which promote cell-protective activities which overlap with those induced by Nrf2 or sirtuins, including the support of mitochondrial function and growth as well as regulating anti-oxidative, anti-inflammatory, and cell repair functions (DNA repair, autophagy), in part via the forkhead box protein O (FOXO) 3 α transcription factor pathway [43, 48, 49]. For instance, the increase of β OHB levels leads to AMPK activation in vitro and in rats [50] as well as in mice [51] or cows [52].

We conclude that during nutritional ketosis, acetoacetate and/or β OHB cause an oxidative and metabolic stress situation that induces signaling via Nrf2 and sirtuins 1 and 3 and activation of AMPK resulting in a protective adaptive response characterized by improved mitochondrial function, an anti-oxidative and anti-inflammatory state, decreased endoplasmic reticulum stress, reduced anabolic metabolism, and strengthened cell repair mechanisms such as DNA repair and autophagy (Fig. 2). The downregulation of anabolic metabolism is also seen when feeding ketone esters in the context of an unrestricted diet, as shown by a decrease in blood glucose and insulin levels [53, 54]. The phenomenon that mild/moderate oxidative or otherwise damaging stress causes an adaptive response conferring stress resistance has been first observed in toxicological studies and has been named hormesis [55]. Studies during recent years have observed hormesis to underly a large number of physiological responses. For instance, hormesis appears to be essential for the beneficial effect of exercise, which initially causes oxidative and pro-inflammatory stress locally, and at the systemic levels followed by an adaptive protective response involving the total organism. Neutralization of exercise-induced ROS by anti-oxidative supplements prevented the upregulation of Nrf2 and training effects such as better muscle performance and mitochondrial function [56, 57]. Similarly, the health effects of many plant polyphenols depend on the electrophilic stress caused by the phytochemicals, upregulation of Nrf2 followed by anti-oxidative, and anti-inflammatory gene expression. Where analyzed, inactivation of the Nrf2 gene prevented the beneficial response to dietary phytochemicals [1, 58, 59].

For the induction of an oxidative stress response, β OHB may bypass the hormesis route and directly promote the gene expression of the anti-oxidant protein metallothionein and of the transcription regulator FOXO3 α which mediates many protective actions of sirtuins. This is achieved by binding to class I and II histone deacetylases leading to enhanced acetylation nuclear histones including the promoter region of FOXO3 α and metallothionein, in vitro and in several

organs of mice, at β OH concentration typical of nutritional ketosis [6, 60]. These findings have recently been challenged in a study of several mammalian cell types. Strong inhibition of histone deacetylases was not observed for β OH but only for butyrate [27]. It was suggested that nonenzymatic beta-hydroxybutyrylation of lysine sites of histones may contribute to the antioxidant effect of ketone bodies [61]. Studies comparing the hormesis route of an adaptive cell response to β OH exposure with that of direct modifying histone acetylation have not been performed; thus, the contribution of the latter to beneficial effects of nutritional ketosis remains unclear.

As a short-chain fatty acid molecule, β OH is expected to possibly bind to several proteins with appropriate lipid binding sites, in addition to histone deacetylation inhibitors. Some experimental data are available for G protein-coupled receptors (GPRs). β OH was found to antagonize binding/signaling of the agonist propionate of GPR41, resulting in decreased activation of sympathetic ganglia and sympathetic tone in mice [62]. However, near maximal inhibition was already seen at 0.1 mmol/l β OH which corresponds to physiological levels seen in the absence of nutritional ketosis.

Another target of β OH is GPR109A (hydroxycarboxylic acid receptor 2). Here, the half-maximal effective concentration is around 0.8 mmol/l [63]. Therefore, GPR109A-dependent effects are expected to occur during ketosis. The closely related receptor GPR109B is activated by an intermediate product of fat beta oxidation, 3-OH-octanoid acid, also at concentrations related to ketosis [64]. Both receptors mitigate lipolysis from adipocytes and hence represent a counterregulatory loop for preventing excessive fatty acid breakdown and concomitant ketoacidosis (Fig. 2).

A further potential target of ketone bodies is the microbiota. This topic is not yet well researched. A recent meta-analysis [65] identified three trials studying the possible impact of carbohydrate-restricted diets on the microbiome of persons with obesity. The results concur in a decrease of Firmicutes bacteria with concomitant less butyrate production [66–68]. Whether this is a direct effect of ketone bodies, a consequence of the probably lower amounts of dietary fiber or of the concomitant weight loss remains to be elucidated.

Clinical experience with ketogenic diets

The results of controlled clinical trials of fasting or very-low-calorie ketogenic diets of 1–3 weeks duration concur in a beneficial impact on body physiology. The expected loss of body weight is characterized by a preferential decrease of abdominal and ectopic fat stores such as in the liver or pancreas. Fasting glucose and insulin levels typically are lowered by 20% or more. Serum

markers of oxidative stress, such as malondialdehyde, and oxidative damage to cellular components are reduced. Systemic low-grade inflammation, such as a mildly increased level of C-reactive protein, is ameliorated, and hypertension is mitigated. Non-randomized trials of mild nutritional ketosis in persons with type 2 diabetes also report lower C-reactive protein concentrations in the intervention group [69–71]. Another consequence of fasting or very-low-calorie diets is lowering of blood levels of total cholesterol together with LDL cholesterol and triglycerides [72–74].

In all but one trial, body weight loss was substantially higher after several weeks or months in the groups with a calorie-restricted ketogenic diet compared with standard calorie-restricted non-ketogenic diets as control. In some trials, it was not tried to keep daily calorie uptake exactly identical between the groups. It may also be important that the macronutrient mass intake is similar between the groups [75]. Participants were overweight or obese, some trials included persons with type 2 diabetes [76–85]. During a dietary intervention period of 1–12 months, loss of body weight was 2–4 times higher in the low-calorie ketogenic diet group compared with the low-calorie non-ketogenic diet group (body weight loss by 4.4–23.7% or 5.8–27 kg versus 0.3–8.3% or 0.3–9.0 kg). Where analyzed, loss of total body fat and/or the decrease in waist circumference was also more pronounced in the group on ketogenic calorie-restricted diet compared with calorie restriction alone [73].

Ketogenic diets without calorie restriction (< 5–10% energy from carbohydrates) also have beneficial physiological responses. In the 1920s, ketogenic diets have been introduced to treat epilepsy in children, in particular, in drug-resistant epilepsy. A recent systematic review concluded that children on a ketogenic diet compared to usual care have an about 3 times higher chance of seizure freedom and an about 6 times higher chance of seizure reduction $\geq 50\%$ of baseline. A parallel meta-analysis of trials in infants and adults did not find a significant effect [86, 87]. Currently, it is not known whether the mechanism responsible for preventing seizures involves the switch from glucose to ketone body utilization as an energy source or the modulation of neuronal signaling pathways by ketone bodies [88]. Beneficial effects of ketogenic diets appear to include a significant reduction of clinical symptoms of further brain disorders such as Alzheimer's or Parkinson's disease, anxiety, depression, or alcohol withdrawal symptoms [89–92].

To date, the largest experience with non-calorie-restricted ketogenic diet probably is in persons with obesity, metabolic syndrome, or type 2 diabetes. Because of the very low content of digestible carbohydrates in this type of diet, it has a very low glycemic index. There are very low postprandial rises of glucose levels which

induce only a little insulin production. The lack of hyperinsulinemia is accompanied by a decrease in insulin resistance, and the latter usually is associated with metabolic improvement, weight loss, and lower blood pressure [93]. When compared with a non-calorie-restricted conventional or low-fat diet, the strongest loss of body weight is observed in the group of carbohydrate-restricted ketogenic diet in overweight/obese persons [94–101]. A recent meta-analysis of obese participants with type 2 diabetes reported a stronger decrease of HbA1c compared with the control diet (difference 0.5%). Levels of fasting insulin and of insulin resistance (HOMA-IR) decreased more strongly during the ketogenic diet [102]. The difference in triglyceride and HDL cholesterol levels was also significantly in favor of the ketogenic diets whereas LDL cholesterol levels increased in response to ketogenic diets. All metabolic effects of ketogenic diets were similar in obese nondiabetic study participants, but of lower magnitude [102]. The increased circulating concentrations of LDL cholesterol during a ketogenic diet may not be detrimental because there is a change in the composition of LDL subclasses, favoring large-sized buoyant LDL with cardioprotective properties over atherogenic smaller dense particles [103–107]. An increase of LDL cholesterol concentrations in the blood was not seen when most of the saturated fats in the diet (75%) were replaced by polyunsaturated fat [108]. A meta-analysis of randomized-controlled diet trials reported that replacing carbohydrates for saturated fat did not impact liver fat content (summary of 12 trials), but there was a reduction of liver fat if unsaturated fat was used in comparison with saturated fat (3 trials) [109]. Because of the clinically relevant effects on glycemic control, the American Diabetes Association has endorsed low-carbohydrate diet as part of medical nutrition therapy options in diabetic patients in 2019 [110].

Our research of published randomized controlled trials did not allow a safe estimate of the metabolic benefit of ketogenic diets in absolute terms. Many trials compared a non-calorie-restricted ketogenic diet with a hypocaloric (low fat) diet and therefore had to be excluded. The remaining trials focused on measures of body weight and fat mass, as described above. Fasting blood glucose was determined in six trials and was lower compared with the comparator diet by 0.7, 0.2, or 10 mmol/l, respectively [94, 97, 98, 100, 101, 106]. Levels of fasting insulin decreased more strongly with the ketogenic diet in 2 of 4 trials, by 1.1 or 3.6 $\mu\text{U/ml}$, respectively [97, 100]. In the other two trials, fasting insulin levels also were lower with the ketogenic diet, but differences did not reach the level of significance, possibly because of the low number of participants and because there was an unexpected decrease of insulin levels also with the comparator diets [94, 106].

As pointed out above, feeding a ketogenic diet is associated with a decrease in insulin secretion because of the low amounts of digestible carbohydrates. There is an association between the decrease of fasting insulin levels and loss of body weight, also in non-ketogenic diets [97, 111]. We have argued previously that insulin is the key driver of weight gain (or weight loss) because of the regulation of lipogenesis versus lipolysis by insulin which is seen already with hormone concentrations in the high normal versus low normal range [1]. Low postprandial insulin levels during a ketogenic diet therefore may be a critical factor accounting for the observed loss of body weight and fat.

Ketogenic diets are being tried in many other chronic disease conditions, such as inflammatory/autoimmune diseases, cancer, or polycystic ovary syndrome, and are being tested for improving physical performance in athletes or for promoting healthy aging. The results of further research have to be awaited.

(Pre)clinical experience with supplementation of ketone bodies

Probably, the largest experience with supplementing ketone bodies comes from patients with a failing heart or appropriate animal models. Supplementing ketone bodies in the absence of a ketogenic diet creates an “artificial” metabolic situation because increased levels of ketone bodies are otherwise only seen if the energy metabolism relies on fat breakdown because of little dietary glucose. One approach of supplementing ketone bodies is the use of calcium and sodium salts of a racemic mixture of βOHB which resulted in a modest increase of circulating levels, to about 0.5 mmol/l. There were gastrointestinal problems and possible long-term risks because of high sodium intake [112]. Much more effective are βOHB esters such as (R)-3-hydroxybutyl (R)-3-hydroxybutyrate which can be given per os to reach > 4 mmol/l of βOHB and was well tolerated during a 28-day trial, except for bitter taste [113, 114].

Ketone bodies have become of interest in the context of heart diseases because fat and ketone body breakdown is the predominant pathway in the myocardium for energy production, including the not-ketotic state, i.e., in the presence of normal glucose supply. A recent quantitative analysis of the arteriovenous gradient for metabolites observed no net extraction of glucose by the non-failing human heart. It was calculated that about 85% of cardiac ATP production was from free or lipoprotein-derived fatty acids, 6.4% from ketones, 4.6% from amino acids, 2.8% from lactate, and 2% from acetate [15]. In patients with heart failure (left ventricular ejection fraction < 40), ATP production from ketones was found to nearly tripled (16.4%) and that of lactate had nearly doubled (5.0%) [15]. Circulating ketone body concentrations were increased in patients with heart failure, in correlation

with cardiac use. The concentrations of β OHB in circulation were also increased in persons with incident heart failure [115]. Circulating levels of ketone bodies and their myocardial use were also found increased in persons with type 2 diabetes [14].

One reason for increased ketone body usage in the diabetic or failing heart may be that ketolysis yields more energy available to synthesize ATP than fatty acid oxidation [116]. However, acute increases of ambient ketone bodies in the perfused mouse heart did not improve cardiac work, although at 2 mmol/l β OHB, ketolysis became the major source of energy production and TCA cycle activity and oxygen consumption were markedly increased [117].

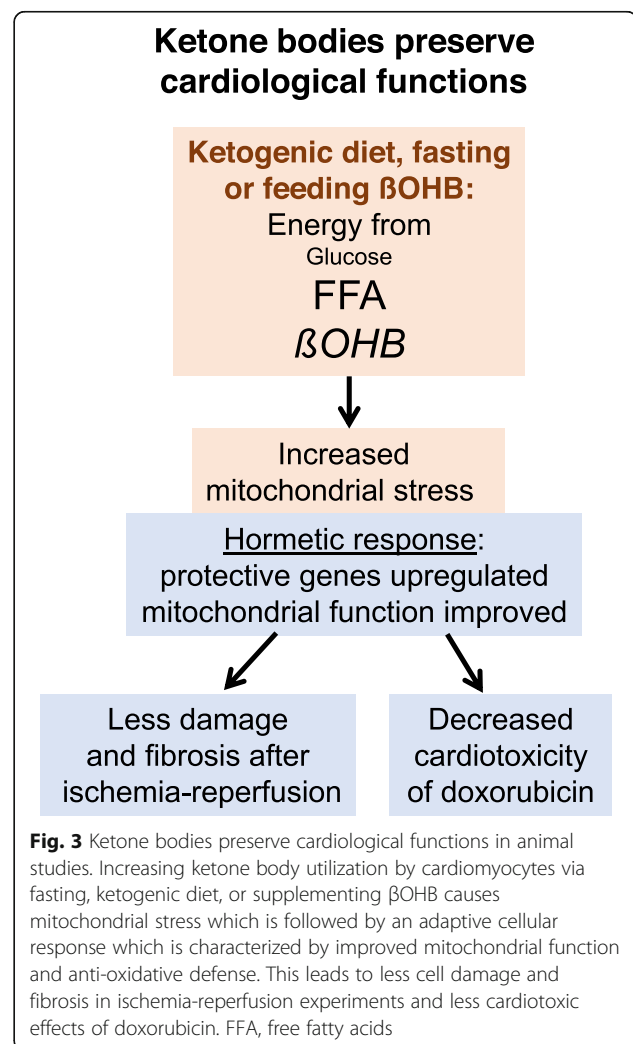
This indicates that, as discussed before, beneficial effects of ketone bodies in the heart require an adaptive cellular response. For one, there is enzyme adaptation to promote β OHB breakdown and a longer myocardial transit time allowing better extraction from the blood [15, 118, 119]. Second, pretreatment of rats for many weeks with a ketogenic diet or 3-day fasting conferred cardioprotective effects in ischemia-reperfusion experiments, compared with a control diet [120, 121]. High concentrations of racemic β OHB reduced myocardial infarct size of isolated rat hearts after coronary artery occlusion and reperfusion only if rats were fasted for several days prior to the experiment [122]. Treatment of mice with β OHB before and during the 24 h reperfusion period after 30 min of ischemia decreased mitochondrial ROS production, increased ATP formation, and improved further parameters of myocardial cell injury including endoplasmic reticulum stress [123].

The adaptive response protecting against myocardial ischemia-reperfusion injury apparently requires a priming phase characterized by increased circulating ketone bodies and their mitochondrial oxidation as an essential condition. Blocking ketolysis by suppressing gene expression of cardiac-specific BDH1 in adult mice eliminated the protective effect of high circulating ketone body levels [124]. This observation argues against a protective effect of β OHB as an intact molecule such as by blocking class I or II histone deacetylases but favors the hormetic pathway discussed above, i.e., metabolizing ketones at high rate causes moderate oxidative stress followed by an adaptive cell protective response including upregulation of anti-oxidative and anti-inflammatory gene products, and of mitochondrial function. Upregulation of these genes is known to mitigate the damage caused by myocardial ischemia and reperfusion [125, 126]. The chemotherapeutic drug doxorubicin causes cardiotoxicity via acute mitochondrial injury. Treatment of mice for 5 days with β OHB or a cardiomyocyte cell line for 24 h prevented doxorubicin-induced cardiac function decline and

fibrosis in vivo, reduced oxidative stress, and maintained mitochondrial function in vitro [127]. Again, this fits with the concept of β OHB as an inductor of an adaptive (hormetic) cell defense response (Fig. 3).

Increasing ketone body levels by pharmaceutical intervention

The blood levels of ketone bodies cannot only be increased despite the absence of a ketogenic diet by exogenous ketone body salts or esters but also by pharmacological treatment. Treatment of type 2 diabetes with sodium-glucose co-transporter 2 (SGLT2) inhibitors for decreasing elevated blood glucose concentrations by less reabsorption in the kidney was found to increase systemic ketone body levels. The ketonemia seen during the administration of SGLT2 inhibitors usually is around 1 mmol/l which corresponds to levels seen after 1–2 days of fasting. The lowering of blood glucose levels was accompanied by a decrease in circulating insulin concentrations, increased glucagon levels, and



gluconeogenesis. The resulting increase of lipolysis and shift to enhanced usage of fatty acids for energy production promotes ketogenesis [128, 129]. Concomitantly, the risk of cardiovascular events was reduced. Treatment of type 2 diabetes with the SGLT2 inhibitor empagliflozin led to a reduction of cardiovascular mortality by 38% and of hospitalizations because of heart failure by 35% [130], similar to cardiovascular outcome trials with dapagliflozin and canagliflozin [131, 132]. The treatment curves SGLT2 inhibitor vs placebo began to diverge within 1 month [133]. These benefits cannot be explained solely by an action of SGLT2 inhibitors to lower blood glucose because similar effects are not seen with glucose-lowering drugs that have a stronger effect on glucose decrease, such as insulin, and because SGLT2 inhibitors also work in patients without diabetes and improve heart failure [134]. Likewise, lowering blood pressure does not appear to be involved because cardioprotection by SGLT2 inhibition is seen in patients receiving additionally other more potent antihypertensive medication [131–134]. The cardioprotective effects cannot be ascribed to a natriuretic action, since these SGLT2 inhibitors exert only a modest effect on plasma volume or on circulating natriuretic peptides [130, 135].

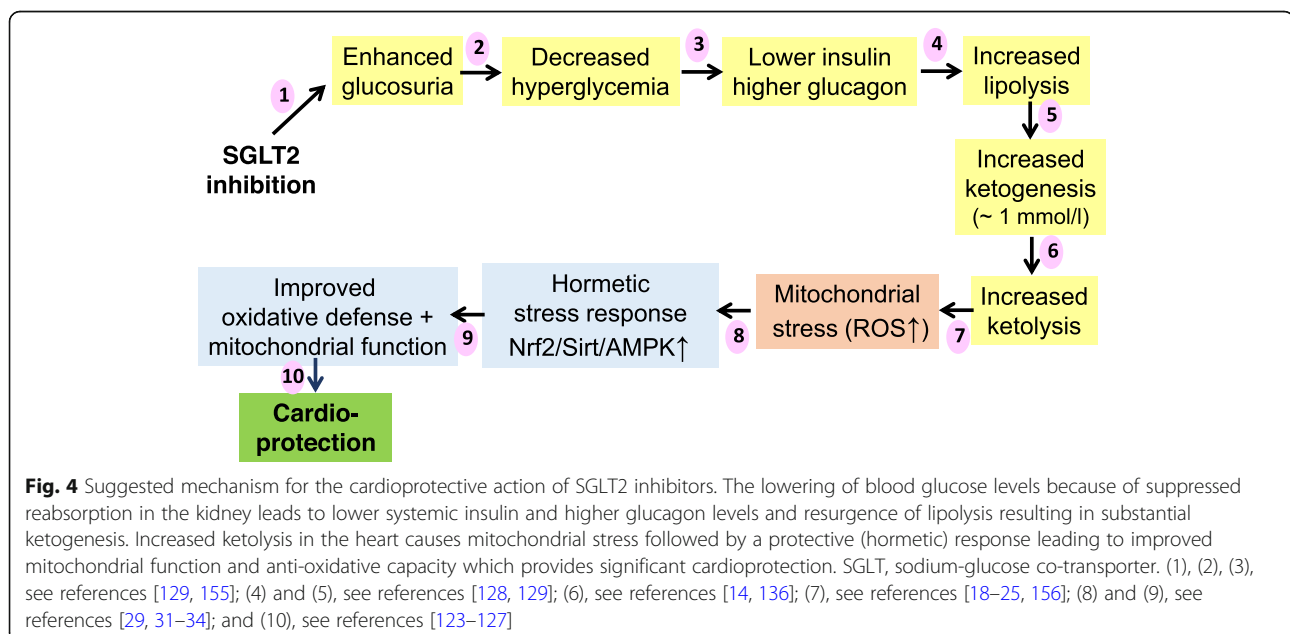
Therefore, it has been proposed that the beneficial effects of ketone bodies on cardiac function account for the cardioprotective action of SGLT2 inhibitors [136]. We wish to modify this hypothesis by suggesting that the major mechanism of cardioprotection is not the provision of readily available energy by β OHB [137] but that the key contribution is the hormetic action of ketone bodies causing a cell-protective phenotype of cardiomyocytes, endothelial cells, and other cell types of the heart. This concept fits with the

observation that SGLT2 inhibitors promote anti-oxidative defense mechanisms, exert anti-inflammatory actions, mitigate fibrosis, or other cardiac remodeling [138, 139]. As described above, the hormetic actions of ketone bodies are mediated via ketone stress-induced Nrf2, AMPK, and sirtuins, all of which increase the production and/or activity of enzymes involved in ROS neutralization, detoxification, DNA repair, proper protein folding during endoplasmic reticulum stress, autophagy, and regeneration. In parallel, pro-inflammatory mediators are downregulated. Support for this concept comes from reports that treatment with SGLT2 inhibitors induce the activity of Nrf2 [138–140], of AMPK [139–146], and of sirtuins [135, 145, 147], accompanied by downregulation of the inflammasome NLRP3 [144, 148, 149] and prevention of doxorubicin cardiotoxicity [150]. Hence, SGLT2 inhibitors induce the same spectrum of cardioprotective mechanisms as seen for treatment with exogenous ketone bodies (Fig. 4).

Chronic kidney disease is another clinical situation where treatment with SGLT2 inhibitors is of benefit [151]. Whether the hormetic mechanisms described above contribute to the observed reduction of intraglomerular pressure is not known.

Risks of ketoacidosis

A theoretical risk of nutritional ketosis or supplementing ketone body salts or esters is ketoacidosis. In such a situation, the concentrations of ketone bodies may reach 25 mmol/l [152]. These levels overpower the capacity of the body to buffer ketotic acids and keep the blood at a pH of around 7.4, in the context of severe hyperglycemia and glucosuria plus concomitant renal loss of sodium and potassium required for buffering ketotic acids. The



acidic milieu in the blood may reach a pH of below 7.30 or even below 7.10. The association of enhanced ketone body production and decreased buffering capacity of blood may also lead to ketoacidosis in patients with type 2 diabetes or even in the absence of hyperglycemia, such as during alcohol abuse or treatment with SGLT2 inhibitors [153, 154].

In metabolic healthy persons, systemic concentrations of ketone bodies may reach 5–7 mmol/l, after prolonged fasting, or up to 5 mmol/l during a ketogenic diet (Table 1). However, the buffering power available during a healthy metabolic state is able to cope with such amounts of ketotic acids and a normal pH of the blood is maintained. Higher levels of circulating ketone bodies do not occur during starvation because fasting blood insulin levels remain in the low normal range which is sufficient to prevent an unrestricted increase of lipolysis. Partial inhibition of lipolysis and stimulation of some lipogenesis is a property of insulin already seen in the normal range of blood insulin levels [1].

Conclusions (Table 2)

Energy metabolism of the liver is fine-tuned in such a way that the synthesis and secretion of ketone bodies are increased substantially during fasting, starvation or low availability of dietary carbohydrates, and the resulting

lower insulin levels. Two special features of liver metabolism are of relevance. For one, hepatocytes engage in gluconeogenesis if the supply of dietary carbohydrates is scarce. Glucose synthesis uses up most of the available oxaloacetate and its precursors so that only little acetyl-CoA resulting from beta oxidation of fatty acids can be channeled into the TCA cycle. Rather, acetyl-CoA is converted into ketone bodies. A second feature promoting hepatic ketone body production and secretion is the lack of the enzyme SCOT which is essential for ketolysis. Ketogenesis thus is a one-way pathway in hepatocytes. Therefore, an unavoidable consequence of food shortage is a tenfold or higher rise of ketone body levels in circulation. We propose here that the ketone body represents a danger signal of impending energy loss and a guardian angel which prepares the body to cope with this situation, by induction of a cell-protective hormetic response.

It is well known that ketone bodies not only serve as ancillary fuel substituting for glucose in most cell types but also induce several other physiological responses which include anti-oxidative, anti-inflammatory, and cardioprotective features. The prevailing ketone body β OHB binds to several target proteins including histone deacetylases, histones, or G protein-coupled receptors. However, it is not known whether these properties relate to the observed beneficial effects of β OHB. We propose here that ketolysis itself is the major mechanism of protective ketone body function. Increased ketolysis causes oxidative stress in the mitochondria which in turn causes a cellular adaptive (hormetic) response characterized by the activation of the master regulators of cell-protective mechanisms, Nrf2, sirtuins 1 and 3, and AMPK. This hormetic response includes upregulation of genes and mediators involved in anti-oxidative and anti-inflammatory activities, improved function and growth of mitochondria, DNA repair, autophagy, and decreased energy expenditure for anabolic purposes.

Probably, all organs of the body may benefit from these actions. In the heart, hormesis following increased ketolysis decreases damage and fibrosis after ischemia-reperfusion or after exposure to cardiotoxic doxorubicin. Although there is no direct evidence, it seems probable that the cardioprotective action of SGLT2 inhibitors involves the same cell-protective hormetic response in the mitochondria stressed by increased ketolysis. Experimental and clinical data support the suggested pathway of SGLT2 inhibitor action, involving a decrease of blood glucose levels via lower insulin and higher glucagon levels, increased lipolysis and gluconeogenesis, enhanced ketogenesis in the liver, and ketolysis in the heart causing mitochondrial stress, followed by an adaptive response causing upregulation of anti-oxidative

Table 2 Key messages

- Starvation or very low availability of digestible carbohydrates lowers insulin levels and alters hepatic energy metabolism in favor of fatty acid-derived ketone body production and gluconeogenesis.
- Ketone bodies β -hydroxybutyrate and acetoacetate can be used as energy substrates in most cell types of the body via ketolysis in the mitochondria.
- The increased concentration of β -hydroxybutyrate appears to function as a danger signal by leading to improved resistance to oxidative and inflammatory stress and reduced total energy expenditure.
- We propose that most protective effects of beta-hydroxybutyrate are not mediated by acting as a ligand for cellular targets but by increased ketolysis which initially causes moderate mitochondrial stress.
- Ketolysis-induced mitochondrial stress that initiates an adaptive (hormetic) response is characterized by the activation of the master regulators of cell-protective mechanisms, Nrf2, sirtuin 1,3, and AMPK.
- The hormetic response includes upregulation of genes and mediators involved in anti-oxidative and anti-inflammatory activities, improved function and growth of mitochondria, DNA repair, and autophagy.
- Probably, all organs of the body may benefit from these actions. Best researched is the heart where increased ketolysis decreases damage after ischemia-reperfusion or after exposure to cardiotoxic doxorubicin.
- The cardioprotective action of SGLT2 inhibitors is well explained by the upregulation of ketone body levels and the subsequent cell-protective hormetic response.
- High insulin levels suppress lipolysis-dependent ketogenesis and the associated beneficial hormetic responses.

and anti-inflammatory capacities as well as improved mitochondrial function, finally resulting in improved cardiovascular functions and resistance to ischemic insults. In this context, low systemic insulin levels are essential. High insulin concentrations in the blood prevent the breakdown of endogenous fat stores and thus suppress ketogenesis and the associated beneficial hormetic responses.

Abbreviations

AMP: Adenosine monophosphate; AMPK: AMP-activated protein kinase; ATP: Adenosine triphosphate; BDH: β OHB dehydrogenase; CCL2: C-C motif chemokine ligand 2; CO₂: Carbon dioxide; CoA: Coenzyme A; CS: Citrate synthase; DNA: Deoxyribonucleic acid; FFA: Free fatty acids; FOXO: Forkhead box protein O; GPRs: G protein-coupled receptors; HbA1c: Hemoglobin A1c; HCA: Hydroxycarboxylic acid receptor; HDAC: Histone deacetylase; HDL: High-density lipoprotein; HMG: Hydroxy methylglutaryl; HMGCL: HMG-CoA lyase; HMGCS2: Hydroxy methylglutaryl-CoA synthase; HOMA-IR: Homeostasis model assessment of insulin resistance; IFN: Interferon; IL: Interleukin; KEAP: Kelch-like ECH-associated protein; LDL: Low-density lipoprotein; MCT1: Monocarboxylate transporter; NAD: Nicotinamide adenine dinucleotide; NADP: Nicotinamide adenine dinucleotide phosphate; NF- κ B: Nuclear factor "kappa-light-chain-enhancer" of activated B cells; NLRP3: NOD-, LRR-, and pyrin domain-containing protein 3; NOX: NADPH oxidase; Nrf2: Nuclear factor erythroid 2-related factor 2; ROS: Reactive oxygen species; SCOT: Succinyl-CoA:3-oxoacid-CoA transferase; SGLT2: Sodium dependent glucose co-transporter 2; SIRT: Silent information regulator sirtuin; SKN: SKINhead; TCA: Tricarboxylic acid; TNF: Tumor necrosis factor; β OHB: β -Hydroxybutyrate

Acknowledgements

We thank Yasemin Kempf for proofreading the manuscript.

Authors' contributions

HK and SM were responsible for the concept and conducted the bibliographic research. HK was responsible for the initial drafting and final writing. SM, KK, MR, NCS, and ML-S participated in the manuscript review and final writing. The last author, SM, is the guarantor for the review; he had full access to all the data and had final responsibility for the decision to submit for publication. All the authors agreed to publish the review; they reviewed and approved the final version.

Funding

Not applicable.

Availability of data and materials

Data for this review were identified by searches of MEDLINE, PubMed, and references from relevant articles using the search terms "ketone bodies," " β -hydroxybutyric acid," "ketogenic diet," "SGLT2 inhibitors," and "mitochondrial function and hormesis." In order to limit the number of references, more recently published papers referring to several previously published articles were cited, if possible. Only articles published in English were selected.

Declarations

Ethics approval and consent to participate

Not applicable.

Consent for publication

Not applicable.

Competing interests

S. Martin has received non-restricted support for the conduct of trials of lifestyle change in persons at risk or with type 2 diabetes from Novartis Pharma GmbH, Boehringer Ingelheim Pharma GmbH & Co. KG, Almed Wellness GmbH, Nintendo of Europe GmbH, HMM Holding AG, and Gesellschaft von Freunden und Förderern der Heinrich-Heine-Universität Düsseldorf e.V. H. Kolb, K. Kempf, M. Röhlings, and M. Lenzen-Schulte have nothing to disclose. N. C. Schloot is currently employed by Lilly Germany and a stockholder of Lilly.

Author details

¹Faculty of Medicine, University of Duesseldorf, Moorenstr. 5, 40225 Duesseldorf, Germany. ²West-German Centre of Diabetes and Health, Duesseldorf Catholic Hospital Group, Hohensandweg 37, 40591 Duesseldorf, Germany. ³Redaktion Deutsches Ärzteblatt, Reinhardtstr. 34, 10117 Berlin, Germany.

Received: 27 August 2021 Accepted: 9 November 2021

Published online: 09 December 2021

References

- Kolb H, Stumvoll M, Kramer W, Kempf K, Martin S. Insulin translates unfavourable lifestyle into obesity. *BMC Med.* 2018;16:232.
- Kolb H, Kempf K, Rohling M, Martin S. Insulin: too much of a good thing is bad. *BMC Med.* 2020;18:224.
- Owen OE, Reichard GA Jr, Patel MS, Boden G. Energy metabolism in feasting and fasting. *Adv Exp Med Biol.* 1979;111:169.
- Laffel L. Ketone bodies: a review of physiology, pathophysiology and application of monitoring to diabetes. *Diabetes Metab Res Rev.* 1999;15:412.
- McPherson PA, McEneny J. The biochemistry of ketogenesis and its role in weight management, neurological disease and oxidative stress. *J Physiol Biochem.* 2012;68:141.
- Puchalska P, Crawford PA. Multi-dimensional roles of ketone bodies in fuel metabolism, signaling, and therapeutics. *Cell Metab.* 2017;25:262.
- Miles JM, Nelson RH. Contribution of triglyceride-rich lipoproteins to plasma free fatty acids. *Horm Metab Res.* 2007;39:726.
- Piche ME, Parry SA, Karpe F, Hodson L. Chylomicron-derived fatty acid spillover in adipose tissue: a signature of metabolic health? *J Clin Endocrinol Metab.* 2018;103:25.
- Veech RL, Bradshaw PC, Clarke K, Curtis W, Pawlosky R, King MT. Ketone bodies mimic the life span extending properties of caloric restriction. *IUBMB Life.* 2017;69:305.
- Cahill GF Jr. Fuel metabolism in starvation. *Annu Rev Nutr.* 2006;26:1.
- Jones AW, Sagarduy A, Ericsson E, Arnqvist HJ. Concentrations of acetone in venous blood samples from drunk drivers, type-1 diabetic outpatients, and healthy blood donors. *J Anal Toxicol.* 1993;17:182.
- Saasa V, Beukes M, Lemmer Y, Mwakikunga B. Blood ketone bodies and breath acetone analysis and their correlations in type 2 diabetes mellitus. *Diagnostics (Basel).* 2019;9.
- Neville MC, Allen JC, Archer PC, Casey CE, Seacat J, Keller RP, et al. Studies in human lactation: milk volume and nutrient composition during weaning and lactogenesis. *Am J Clin Nutr.* 1991;54:81.
- Mizuno Y, Harada E, Nakagawa H, Morikawa Y, Shono M, Kugimiya F, et al. The diabetic heart utilizes ketone bodies as an energy source. *Metabolism.* 2017;77:65.
- Murashige D, Jang C, Neinast M, Edwards JJ, Cowan A, Hyman MC, et al. Comprehensive quantification of fuel use by the failing and nonfailing human heart. *Science.* 2020;370:364.
- Owen OE, Reichard GA Jr. Human forearm metabolism during progressive starvation. *J Clin Invest.* 1971;50:1536.
- Evans M, Cogan KE, Egan B. Metabolism of ketone bodies during exercise and training: physiological basis for exogenous supplementation. *J Physiol.* 2017;595:2857.
- St-Pierre J, Buckingham JA, Roebuck SJ, Brand MD. Topology of superoxide production from different sites in the mitochondrial electron transport chain. *J Biol Chem.* 2002;277:44784.
- Anderson EJ, Yamazaki H, Neuffer PD. Induction of endogenous uncoupling protein 3 suppresses mitochondrial oxidant emission during fatty acid-supported respiration. *J Biol Chem.* 2007;282:31257.
- Miller VJ, Villamena FA, Volek JS. Nutritional ketosis and mitohormesis: potential implications for mitochondrial function and human health. *J Nutr Metab.* 2018;2018:5157645.
- Elamin M, Ruskin DN, Masino SA, Sacchetti P. Ketone-based metabolic therapy: is increased NAD(+) a primary mechanism? *Front Mol Neurosci.* 2017;10:377.
- Jain SK, Kannan K, Lim G. Ketosis (acetoacetate) can generate oxygen radicals and cause increased lipid peroxidation and growth inhibition in human endothelial cells. *Free Radic Biol Med.* 1998;25:1083.
- Abdelmegeed MA, Kim SK, Woodcroft KJ, Novak RF. Acetoacetate activation of extracellular signal-regulated kinase 1/2 and p38 mitogen-activated

- protein kinase in primary cultured rat hepatocytes: role of oxidative stress. *J Pharmacol Exp Ther.* 2004;310:728.
24. Shi X, Li X, Li D, Li Y, Song Y, Deng Q, et al. β -Hydroxybutyrate activates the NF- κ B signaling pathway to promote the expression of pro-inflammatory factors in calf hepatocytes. *Cell Physiol Biochem.* 2014;33:920.
 25. Shi X, Li D, Deng Q, Peng Z, Zhao C, Li X, et al. Acetoacetic acid induces oxidative stress to inhibit the assembly of very low density lipoprotein in bovine hepatocytes. *J Dairy Res.* 2016;83:442.
 26. Kanikarla-Marie P, Jain SK. Hyperketonemia (acetoacetate) upregulates NADPH oxidase 4 and elevates oxidative stress, ICAM-1, and monocyte adhesivity in endothelial cells. *Cell Physiol Biochem.* 2015;35:364.
 27. Chriett S, Dabek A, Wojtala M, Vidal H, Balcerczyk A, Pirola L. Prominent action of butyrate over beta-hydroxybutyrate as histone deacetylase inhibitor, transcriptional modulator and anti-inflammatory molecule. *Sci Rep.* 2019;9:742.
 28. Han YM, Ramprasath T, Zou MH. β -Hydroxybutyrate and its metabolic effects on age-associated pathology. *Exp Mol Med.* 2020;52:548.
 29. Milder JB, Liang LP, Patel M. Acute oxidative stress and systemic Nrf2 activation by the ketogenic diet. *Neurobiol Dis.* 2010;40:238.
 30. Lu Y, Yang YY, Zhou MW, Liu N, Xing HY, Liu XX, et al. Ketogenic diet attenuates oxidative stress and inflammation after spinal cord injury by activating Nrf2 and suppressing the NF- κ B signaling pathways. *Neurosci Lett.* 2018;683:13.
 31. Youm YH, Nguyen KY, Grant RW, Goldberg EL, Bodogai M, Kim D, et al. The ketone metabolite beta-hydroxybutyrate blocks NLRP3 inflammasome-mediated inflammatory disease. *Nat Med.* 2015;21:263.
 32. Meroni E, Papini N, Crisculi F, Casiraghi MC, Massaccesi L, Basilio N, et al. Metabolic responses in endothelial cells following exposure to ketone bodies. *Nutrients.* 2018;10.
 33. Izuta Y, Imada T, Hisamura R, Oonishi E, Nakamura S, Inagaki E, et al. Ketone body 3-hydroxybutyrate mimics calorie restriction via the Nrf2 activator, fumarate, in the retina. *Aging Cell.* 2018;17.
 34. Pearson KJ, Lewis KN, Price NL, Chang JW, Perez E, Cascajo MV, et al. Nrf2 mediates cancer protection but not longevity induced by caloric restriction. *Proc Natl Acad Sci U S A.* 2008;105:2325.
 35. Bishop NA, Guarente L. Two neurons mediate diet-restriction-induced longevity in *C. elegans*. *Nature.* 2007;447:545.
 36. Tebay LE, Robertson H, Durant ST, Vitale SR, Penning TM, Dinkova-Kostova AT, et al. Mechanisms of activation of the transcription factor Nrf2 by redox stressors, nutrient cues, and energy status and the pathways through which it attenuates degenerative disease. *Free Radic Biol Med.* 2015;88:108.
 37. Tsushima M, Liu J, Hirao W, Yamazaki H, Tomita H, Itoh K. Emerging evidence for crosstalk between Nrf2 and mitochondria in physiological homeostasis and in heart disease. *Arch Pharm Res.* 2020;43:286.
 38. Hartwick BS, Oliveira PR. The interplay between mitochondrial reactive oxygen species, endoplasmic reticulum stress, and Nrf2 signaling in cardiometabolic health. *Antioxid Redox Signal.* 2021;35:252.
 39. Otsuki A, Yamamoto M. Cis-element architecture of Nrf2-sMaf heterodimer binding sites and its relation to diseases. *Arch Pharm Res.* 2020;43:275.
 40. Unoki T, Akiyama M, Kumagai Y. Nrf2 activation and its coordination with the protective defense systems in response to electrophilic stress. *Int J Mol Sci.* 2020;21.
 41. Baird L, Yamamoto M. The molecular mechanisms regulating the KEAP1-NRF2 pathway. *Mol Cell Biol.* 2020;40.
 42. Lee SH, Lee JH, Lee HY, Min KJ. Sirtuin signaling in cellular senescence and aging. *BMB Rep.* 2019;52:24.
 43. Thirupathi A, de Souza CT. Multi-regulatory network of ROS: the interconnection of ROS, PGC-1 alpha, and AMPK-SIRT1 during exercise. *J Physiol Biochem.* 2017;73:487.
 44. Hasan-Olive MM, Lauritzen KH, Ali M, Rasmussen LJ, Storm-Mathisen J, Bergersen LH. A ketogenic diet improves mitochondrial biogenesis and bioenergetics via the PGC1 α -SIRT3-UCP2 axis. *Neurochem Res.* 2019;44:22.
 45. Yin J, Nielsen M, Li S, Shi J. Ketones improves apolipoprotein E4-related memory deficiency via sirtuin 3. *Aging (Albany NY).* 2019;11:4579.
 46. Yin J, Han P, Tang Z, Liu Q, Shi J. Sirtuin 3 mediates neuroprotection of ketones against ischemic stroke. *J Cereb Blood Flow Metab.* 2015;35:1783.
 47. Dabke P, Das AM. Mechanism of action of ketogenic diet treatment: impact of decanoic acid and beta-hydroxybutyrate on sirtuins and energy metabolism in hippocampal murine neurons. *Nutrients.* 2020;12.
 48. Yang YM, Han CY, Kim YJ, Kim SG. AMPK-associated signaling to bridge the gap between fuel metabolism and hepatocyte viability. *World J Gastroenterol.* 2010;16:3731.
 49. Gano LB, Patel M, Rho JM. Ketogenic diets, mitochondria, and neurological diseases. *J Lipid Res.* 2014;55:2211.
 50. Bae HR, Kim DH, Park MH, Lee B, Kim MJ, Lee EK, et al. β -Hydroxybutyrate suppresses inflammasome formation by ameliorating endoplasmic reticulum stress via AMPK activation. *Oncotarget.* 2016;7:66444.
 51. Guo Q, Liu S, Wang S, Wu M, Li Z, Wang Y. Beta-hydroxybutyric acid attenuates neuronal damage in epileptic mice. *Acta Histochem.* 2019;121:455.
 52. Deng Q, Liu G, Liu L, Zhang Y, Yin L, Shi X, et al. BHBA influences bovine hepatic lipid metabolism via AMPK signaling pathway. *J Cell Biochem.* 2015;116:1070.
 53. Kashiwaya Y, Pawlosky R, Markis W, King MT, Bergman C, Srivastava S, et al. A ketone ester diet increases brain malonyl-CoA and uncoupling proteins 4 and 5 while decreasing food intake in the normal Wistar Rat. *J Biol Chem.* 2010;285:25950.
 54. Srivastava S, Kashiwaya Y, King MT, Baxa U, Tam J, Niu G, et al. Mitochondrial biogenesis and increased uncoupling protein 1 in brown adipose tissue of mice fed a ketone ester diet. *FASEB J.* 2012;26:2351.
 55. Calabrese EJ, Blain R. The occurrence of hormetic dose responses in the toxicological literature, the hormesis database: an overview. *Toxicol Appl Pharmacol.* 2005;202:289.
 56. Merry TL, Ristow M. Nuclear factor erythroid-derived 2-like 2 (NFE2L2, Nrf2) mediates exercise-induced mitochondrial biogenesis and the anti-oxidant response in mice. *J Physiol.* 2016;594:5195.
 57. Coleman V, Sa-Nguanmoo P, Koenig J, Schulz TJ, Grune T, Klaus S, et al. Partial involvement of Nrf2 in skeletal muscle mitohormesis as an adaptive response to mitochondrial uncoupling. *Sci Rep.* 2018;8:2446.
 58. Qin S, Hou DX. Multiple regulations of Keap1/Nrf2 system by dietary phytochemicals. *Mol Nutr Food Res.* 2016;60:1731.
 59. Kanner J. Polyphenols by generating H₂O₂, affect cell redox signaling, inhibit PTPs and activate Nrf2 axis for adaptation and cell surviving: in vitro, in vivo and human health. *Antioxidants (Basel).* 2020;9.
 60. Shimazu T, Hirschey MD, Hua L, Dittenhafer-Reed KE, Schwer B, Lombard DB, et al. SIRT3 deacetylates mitochondrial 3-hydroxy-3-methylglutaryl CoA synthase 2 and regulates ketone body production. *Cell Metab.* 2010;12:654.
 61. Xie Z, Zhang D, Chung D, Tang Z, Huang H, Dai L, et al. Metabolic regulation of gene expression by histone lysine beta-hydroxybutyrylation. *Mol Cell.* 2016;62:194.
 62. Kimura I, Inoue D, Maeda T, Hara T, Ichimura A, Miyauchi S, et al. Short-chain fatty acids and ketones directly regulate sympathetic nervous system via G protein-coupled receptor 41 (GPR41). *Proc Natl Acad Sci U S A.* 2011;108:8030.
 63. Taggart AK, Kero J, Gan X, Cai TQ, Cheng K, Ippolito M, et al. (D)-beta-hydroxybutyrate inhibits adipocyte lipolysis via the nicotinic acid receptor PUMA-G. *J Biol Chem.* 2005;280:26649.
 64. Ahmed K, Tunaru S, Langhans CD, Hanson J, Michalski CW, Kolker S, et al. Deorphanization of GPR109B as a receptor for the beta-oxidation intermediate 3-OH-octanoic acid and its role in the regulation of lipolysis. *J Biol Chem.* 2009;284:21928.
 65. Rondanelli M, Gasparri C, Peroni G, Faliva MA, Naso M, Perna S, et al. The potential roles of very low calorie, very low calorie ketogenic diets and very low carbohydrate diets on the gut microbiota composition. *Front Endocrinol (Lausanne).* 2021;12:662591.
 66. Ley RE, Turnbaugh PJ, Klein S, Gordon JI. Microbial ecology: human gut microbes associated with obesity. *Nature.* 2006;444:1022.
 67. Duncan SH, Belonguer A, Holtrop G, Johnstone AM, Flint HJ, Lobley GE. Reduced dietary intake of carbohydrates by obese subjects results in decreased concentrations of butyrate and butyrate-producing bacteria in feces. *Appl Environ Microbiol.* 2007;73:1073.
 68. Duncan SH, Lobley GE, Holtrop G, Ince J, Johnstone AM, Louis P, et al. Human colonic microbiota associated with diet, obesity and weight loss. *Int J Obes (Lond).* 2008;32:1720.
 69. Hallberg SJ, McKenzie AL, Williams PT, Bhanpuri NH, Peters AL, Campbell WW, et al. Effectiveness and safety of a novel care model for the management of type 2 diabetes at 1 year: an open-label, non-randomized, controlled study. *Diabetes Ther.* 2018;9:583.
 70. Bhanpuri NH, Hallberg SJ, Williams PT, McKenzie AL, Ballard KD, Campbell WW, et al. Cardiovascular disease risk factor responses to a type 2 diabetes care model including nutritional ketosis induced by sustained carbohydrate restriction at 1 year: an open label, non-randomized, controlled study. *Cardiovasc Diabetol.* 2018;17:56.

71. Athinarayanan SJ, Adams RN, Hallberg SJ, McKenzie AL, Bhanpuri NH, Campbell WW, et al. Long-term effects of a novel continuous remote care intervention including nutritional ketosis for the management of type 2 diabetes: a 2-year non-randomized clinical trial. *Front Endocrinol (Lausanne)*. 2019;10:348.
72. Longo VD, Mattson MP. Fasting: molecular mechanisms and clinical applications. *Cell Metab*. 2014;19:181.
73. Muscogiuri G, El GM, Colao A, Hassapidou M, Yumuk V, Busetto L. European guidelines for obesity management in adults with a very low-calorie ketogenic diet: a systematic review and meta-analysis. *Obes Facts*. 2021;14:222.
74. Taylor R, Al-Mrabeh A, Sattar N. Understanding the mechanisms of reversal of type 2 diabetes. *Lancet Diabetes Endocrinol*. 2019;7:726.
75. Arencibia-Albite F. Serious analytical inconsistencies challenge the validity of the energy balance theory. *Heliyon*. 2020;6:e04204.
76. Brehm BJ, Seeley RJ, Daniels SR, D'Alessio DA. A randomized trial comparing a very low carbohydrate diet and a calorie-restricted low fat diet on body weight and cardiovascular risk factors in healthy women. *J Clin Endocrinol Metab*. 2003;88:1617.
77. Samaha FF, Iqbal N, Seshadri P, Chicano KL, Daily DA, McGrory J, et al. A low-carbohydrate as compared with a low-fat diet in severe obesity. *N Engl J Med*. 2003;348:2074.
78. Moreno B, Bellido D, Sajoux I, Goday A, Saavedra D, Crujeiras AB, et al. Comparison of a very low-calorie-ketogenic diet with a standard low-calorie diet in the treatment of obesity. *Endocrine*. 2014;47:793.
79. Moreno B, Crujeiras AB, Bellido D, Sajoux I, Casanueva FF. Obesity treatment by very low-calorie-ketogenic diet at two years: reduction in visceral fat and on the burden of disease. *Endocrine*. 2016;54:681.
80. Goday A, Bellido D, Sajoux I, Crujeiras AB, Burguera B, Garcia-Luna PP, et al. Short-term safety, tolerability and efficacy of a very low-calorie-ketogenic diet interventional weight loss program versus hypocaloric diet in patients with type 2 diabetes mellitus. *Nutr Diabetes*. 2016;6:e230.
81. Perticone M, Maio R, Sciacqua A, Suraci E, Pinto A, Pujia R, et al. Ketogenic diet-induced weight loss is associated with an increase in vitamin D levels in obese adults. *Molecules*. 2019;24.
82. Sajoux I, Lorenzo PM, Gomez-Arbelaes D, Zulet MA, Abete I, Castro AI, et al. Effect of a very-low-calorie ketogenic diet on circulating myokine levels compared with the effect of bariatric surgery or a low-calorie diet in patients with obesity. *Nutrients*. 2019;11.
83. Di LC, Pinto A, Ienca R, Coppola G, Sirianni G, Di LG, et al. A randomized double-blind, cross-over trial of very low-calorie diet in overweight migraine patients: a possible role for ketones? *Nutrients*. 2019;11.
84. Cunha GM, Guzman G, Correa De Mello LL, Trein B, Spina L, Bussada I et al. Efficacy of a 2-month very low-calorie ketogenic diet (VLCKD) compared to a standard low-calorie diet in reducing visceral and liver fat accumulation in patients with obesity. *Front Endocrinol (Lausanne)*. 2020;11:607.
85. Moriconi E, Camajani E, Fabbri A, Lenzi A, Lenzi A, Caprio M. Very-low-calorie ketogenic diet as a safe and valuable tool for long-term glycaemic management in patients with obesity and type 2 diabetes. *Nutrients*. 2021;13.
86. Martin-McGill KJ, Bresnahan R, Levy RG, Cooper PN. Ketogenic diets for drug-resistant epilepsy. *Cochrane Database Syst Rev*. 2020;6:CD001903.
87. Lyons L, Schoeler NE, Langan D, Cross JH. Use of ketogenic diet therapy in infants with epilepsy: a systematic review and meta-analysis. *Epilepsia*. 2020;61:1261.
88. Fei Y, Shi R, Song Z, Wu J. Metabolic control of epilepsy: a promising therapeutic target for epilepsy. *Front Neurol*. 2020;11:592514.
89. Jensen NJ, Wodschow HZ, Nilsson M, Rungby J. Effects of ketone bodies on brain metabolism and function in neurodegenerative diseases. *Int J Mol Sci*. 2020;21.
90. Norwitz NG, Naidoo U. Nutrition as metabolic treatment for anxiety. *Front Psychiatry*. 2021;12:598119.
91. Grammatikopoulou MG, Goulis DG, Kgiouras K, Theodoridis X, Gkoukou KK, Evangelidou A, et al. To keto or not to keto? A systematic review of randomized controlled trials assessing the effects of ketogenic therapy on Alzheimer disease. *Adv Nutr*. 2020;11:1583.
92. Wiers CE, Vendruscolo LF, van der Veen JW, Manza P, Shokri-Kojori E, Kroll DS, et al. Ketogenic diet reduces alcohol withdrawal symptoms in humans and alcohol intake in rodents. *Sci Adv*. 2021;7.
93. Brand-Miller J, McMillan-Price J, Steinbeck K, Caterson I. Dietary glycemic index: health implications. *J Am Coll Nutr*. 2009;28(Suppl):446S.
94. Gardner CD, Kiazand A, Alhassan S, Kim S, Stafford RS, Balise RR, et al. Comparison of the Atkins, Zone, Ornish, and LEARN diets for change in weight and related risk factors among overweight premenopausal women: the A TO Z Weight Loss Study: a randomized trial. *JAMA*. 2007;297:969.
95. Truby H, Baic S, Delooy A, Fox KR, Livingstone MB, Logan CM, et al. Randomised controlled trial of four commercial weight loss programmes in the UK: initial findings from the BBC "diet trials". *BMJ*. 2006;332:1309.
96. Daly ME, Paisey R, Paisey R, Millward BA, Eccles C, Williams K et al. Short-term effects of severe dietary carbohydrate-restriction advice in type 2 diabetes—a randomized controlled trial. *Diabet Med*. 2006;23:15.
97. Dansinger ML, Gleason JA, Griffith JL, Selker HP, Schaefer EJ. Comparison of the Atkins, Ornish, Weight Watchers, and Zone diets for weight loss and heart disease risk reduction: a randomized trial. *JAMA*. 2005;293:43.
98. Johnstone AM, Horgan GW, Murison SD, Bremner DM, Lobley GE. Effects of a high-protein ketogenic diet on hunger, appetite, and weight loss in obese men feeding ad libitum. *Am J Clin Nutr*. 2008;87:44.
99. Jabekk PT, Moe IA, Meen HD, Tomten SE, Hostmark AT. Resistance training in overweight women on a ketogenic diet conserved lean body mass while reducing body fat. *Nutr Metab (Lond)*. 2010;7:17.
100. Cohen CW, Fontaine KR, Arend RC, Alvarez RD, Leath CA III, Huh WK, et al. A ketogenic diet reduces central obesity and serum insulin in women with ovarian or endometrial cancer. *J Nutr*. 2018;148:1253.
101. Perissiou M, Borkoles E, Kobayashi K, Polman R. The effect of an 8 week prescribed exercise and low-carbohydrate diet on cardiorespiratory fitness, body composition and cardiometabolic risk factors in obese individuals: a randomised controlled trial. *Nutrients*. 2020;12.
102. Choi YJ, Jeon SM, Shin S. Impact of a ketogenic diet on metabolic parameters in patients with obesity or overweight and with or without type 2 diabetes: a meta-analysis of randomized controlled trials. *Nutrients*. 2020;12.
103. Westman EC, Yancy WS Jr, Olsen MK, Dudley T, Guyton JR. Effect of a low-carbohydrate, ketogenic diet program compared to a low-fat diet on fasting lipoprotein subclasses. *Int J Cardiol*. 2006;110:212.
104. Volek JS, Fernandez ML, Feinman RD, Phinney SD. Dietary carbohydrate restriction induces a unique metabolic state positively affecting atherogenic dyslipidemia, fatty acid partitioning, and metabolic syndrome. *Prog Lipid Res*. 2008;47:307.
105. Gerber PA, Berneis K. Regulation of low-density lipoprotein subfractions by carbohydrates. *Curr Opin Clin Nutr Metab Care*. 2012;15:381.
106. Hyde PN, Sapper TN, Crabtree CD, LaFountain RA, Bowling ML, Buga A, et al. Dietary carbohydrate restriction improves metabolic syndrome independent of weight loss. *J Clin Insight*. 2019;4.
107. Falkenhain K, Roach LA, McCreary S, McArthur E, Weiss EJ, Francois ME, et al. Effect of carbohydrate-restricted dietary interventions on LDL particle size and number in adults in the context of weight loss or weight maintenance: a systematic review and meta-analysis. *Am J Clin Nutr*. 2021.
108. Fuehrlein BS, Rutenberg MS, Silver JN, Warren MW, Theriaque DW, Duncan GE, et al. Differential metabolic effects of saturated versus polyunsaturated fats in ketogenic diets. *J Clin Endocrinol Metab*. 2004;89:1641.
109. Winters-van EE, Verkouter I, Peters HPF, Alsema M, de Roos BG, Schrauwen-Hinderling VB, et al. Effects of dietary macronutrients on liver fat content in adults: a systematic review and meta-analysis of randomized controlled trials. *Eur J Clin Nutr*. 2021;75:588.
110. American Diabetes Association. 5. Lifestyle management: standards of medical care in diabetes-2019. *Diabetes Care*. 2019;42:S46-S60.
111. Gershuni VM, Yan SL, Medici V. Nutritional ketosis for weight management and reversal of metabolic syndrome. *Curr Nutr Rep*. 2018;7:97.
112. Fischer T, Och U, Klawon I, Och T, Gruneberg M, Fobker M, et al. Effect of a sodium and calcium DL-beta-hydroxybutyrate salt in healthy adults. *J Nutr Metab*. 2018;2018:9812806.
113. Clarke K, Tchabanenko K, Pawlosky R, Carter E, Todd KM, Musa-Veloso K, et al. Kinetics, safety and tolerability of (R)-3-hydroxybutyl (R)-3-hydroxybutyrate in healthy adult subjects. *Regul Toxicol Pharmacol*. 2012;63:401.
114. Soto-Mota A, Vansant H, Evans RD, Clarke K. Safety and tolerability of sustained exogenous ketosis using ketone monoester drinks for 28 days in healthy adults. *Regul Toxicol Pharmacol*. 2019;109:104506.
115. Flores-Guerrero JL, Westenbrink BD, Connelly MA, Otvos JD, Groothof D, Shalaurova I, et al. Association of beta-hydroxybutyrate with development of heart failure: sex differences in a Dutch population cohort. *Eur J Clin Invest*. 2021;51:e13468.
116. Sato K, Kashiwaya Y, Keon CA, Tsuchiya N, King MT, Radda GK, et al. Insulin, ketone bodies, and mitochondrial energy transduction. *FASEB J*. 1995;9:651.
117. Ho KL, Karwi QG, Wagg C, Zhang L, Vo K, Altamimi T, et al. Ketones can become the major fuel source for the heart but do not increase cardiac efficiency. *Cardiovasc Res*. 2021;117:1178.

118. Aubert G, Martin OJ, Horton JL, Lai L, Vega RB, Leone TC, et al. The failing heart relies on ketone bodies as a fuel. *Circulation*. 2016;133:698.
119. Bedi KC Jr, Snyder NW, Brandimarto J, Aziz M, Mesaros C, Worth AJ, et al. Evidence for intramyocardial disruption of lipid metabolism and increased myocardial ketone utilization in advanced human heart failure. *Circulation*. 2016;133:706.
120. Al-Zaid NS, Dashti HM, Mathew TC, Juggi JS. Low carbohydrate ketogenic diet enhances cardiac tolerance to global ischaemia. *Acta Cardiol*. 2007;62:381.
121. Snorek M, Hodyc D, Sedivy V, Durisova J, Skoumalova A, Wilhelm J, et al. Short-term fasting reduces the extent of myocardial infarction and incidence of reperfusion arrhythmias in rats. *Physiol Res*. 2012;61:567.
122. Zou Z, Sasaguri S, Rajesh KG, Suzuki R. DL-3-Hydroxybutyrate administration prevents myocardial damage after coronary occlusion in rat hearts. *Am J Physiol Heart Circ Physiol*. 2002;283:H1968–74.
123. Yu Y, Yu Y, Zhang Y, Zhang Z, An W, Zhao X. Treatment with D-beta-hydroxybutyrate protects heart from ischemia/reperfusion injury in mice. *Eur J Pharmacol*. 2018;829:121.
124. Horton JL, Davidson MT, Kurishima C, Vega RB, Powers JC, Matsuura TR, et al. The failing heart utilizes 3-hydroxybutyrate as a metabolic stress defense. *JCI. Insight*. 2019;4.
125. Cadenas S. ROS and redox signaling in myocardial ischemia-reperfusion injury and cardioprotection. *Free Radic Biol Med*. 2018;117:76.
126. Zhang X, Yu Y, Lei H, Cai Y, Shen J, Zhu P, et al. The Nrf-2/HO-1 signaling axis: a ray of hope in cardiovascular diseases. *Cardiol Res Pract*. 2020;2020:5695723.
127. Liu Y, Wei X, Wu M, Xu J, Xu B, Kang L. Cardioprotective roles of beta-hydroxybutyrate against doxorubicin induced cardiotoxicity. *Front Pharmacol*. 2020;11:603596.
128. Taylor SI, Blau JE, Rother KI. SGLT2 inhibitors may predispose to ketoacidosis. *J Clin Endocrinol Metab*. 2015;100:2849.
129. Ferrannini E, Baldi S, Frascerra S, Astiarraga B, Heise T, Bizzotto R, et al. Shift to fatty substrate utilization in response to sodium-glucose cotransporter 2 inhibition in subjects without diabetes and patients with type 2 diabetes. *Diabetes*. 2016;65:1190.
130. Ferrannini G, Savarese G, Ryden L. Sodium-glucose transporter inhibition in heart failure: from an unexpected side effect to a novel treatment possibility. *Diabetes Res Clin Pract*. 2021;175:108796.
131. Wiviott SD, Raz I, Bonaca MP, Mosenzon O, Kato ET, Cahn A, et al. Dapagliflozin and cardiovascular outcomes in type 2 diabetes. *N Engl J Med*. 2019;380:347.
132. Neal B, Perkovic V, Mahaffey KW, de ZD, Fulcher G, Erondun N et al. Canagliflozin and cardiovascular and renal events in type 2 diabetes. *N Engl J Med*. 2017;377:644.
133. Zinman B, Wanner C, Lachin JM, Fitchett D, Bluhmki E, Hantel S, et al. Empagliflozin, cardiovascular outcomes, and mortality in type 2 diabetes. *N Engl J Med*. 2015;373:2117.
134. Shoar S, Shah AA, Ikram W, Farooq N, Udoh A, Tabibzadeh E, et al. Cardiovascular benefits of SGLT2 inhibitors in patients with heart failure: a meta-analysis of small and large randomized controlled trials. *Am J Cardiovasc Dis*. 2021;11:262.
135. Packer M. Cardioprotective effects of sirtuin-1 and its downstream effectors: potential role in mediating the heart failure benefits of SGLT2 (sodium-glucose cotransporter 2) inhibitors. *Circ Heart Fail*. 2020;13:e007197.
136. Ferrannini E, Mark M, Mayoux E. CV protection in the EMPA-REG OUTCOME Trial: a “thrifty substrate” hypothesis. *Diabetes Care*. 2016;39:1108.
137. Verma S, Rawat S, Ho KL, Wagg CS, Zhang L, Teoh H, et al. Empagliflozin increases cardiac energy production in diabetes: novel translational insights into the heart failure benefits of SGLT2 inhibitors. *JACC Basic Transl Sci*. 2018;3:575.
138. Li C, Zhang J, Xue M, Li X, Han F, Liu X, et al. SGLT2 inhibition with empagliflozin attenuates myocardial oxidative stress and fibrosis in diabetic mice heart. *Cardiovasc Diabetol*. 2019;18:15.
139. Sun X, Han F, Lu Q, Li X, Ren D, Zhang J, et al. Empagliflozin ameliorates obesity-related cardiac dysfunction by regulating Sestrin2-mediated AMPK-mTOR signaling and redox homeostasis in high-fat diet-induced obese mice. *Diabetes*. 2020;69:1292.
140. Arab HH, Al-Shorbagy MY, Saad MA. Activation of autophagy and suppression of apoptosis by dapagliflozin attenuates experimental inflammatory bowel disease in rats: targeting AMPK/mTOR, HMGB1/RAGE and Nrf2/HO-1 pathways. *Chem Biol Interact*. 2021;335:109368.
141. Hawley SA, Ford RJ, Smith BK, Gowans GJ, Mancini SJ, Pitt RD, et al. The Na⁺/glucose cotransporter inhibitor canagliflozin activates AMPK by inhibiting mitochondrial function and increasing cellular AMP levels. *Diabetes*. 2016;65:2784.
142. Zhou H, Wang S, Zhu P, Hu S, Chen Y, Ren J. Empagliflozin rescues diabetic myocardial microvascular injury via AMPK-mediated inhibition of mitochondrial fission. *Redox Biol*. 2018;15:335.
143. Koyani CN, Plastira I, Sourij H, Hallstrom S, Schmidt A, Rainer PP, et al. Empagliflozin protects heart from inflammation and energy depletion via AMPK activation. *Pharmacol Res*. 2020;158:104870.
144. Chen H, Tran D, Yang HC, Nylander S, Birnbaum Y, Ye Y. Dapagliflozin and ticagrelor have additive effects on the attenuation of the activation of the NLRP3 inflammasome and the progression of diabetic cardiomyopathy: an AMPK-mTOR interplay. *Cardiovasc Drugs Ther*. 2020;34:443.
145. Hoong CWS, Chua MWJ. SGLT2 inhibitors as calorie restriction mimetics: insights on longevity pathways and age-related diseases. *Endocrinology*. 2021;162.
146. Ren C, Sun K, Zhang Y, Hu Y, Hu B, Zhao J, et al. Sodium-glucose cotransporter-2 inhibitor empagliflozin ameliorates sunitinib-induced cardiac dysfunction via regulation of AMPK-mTOR signaling pathway-mediated autophagy. *Front Pharmacol*. 2021;12:664181.
147. Lee JY, Lee M, Lee JY, Bae J, Shin E, Lee YH, et al. Ipragliflozin, an SGLT2 inhibitor, ameliorates high-fat diet-induced metabolic changes by upregulating energy expenditure through activation of the AMPK/SIRT1 pathway. *Diabetes Metab J*. 2021.
148. Ye Y, Bajaj M, Yang HC, Perez-Polo JR, Birnbaum Y. SGLT-2 inhibition with dapagliflozin reduces the activation of the Nlrp3/ASC inflammasome and attenuates the development of diabetic cardiomyopathy in mice with type 2 diabetes. Further augmentation of the effects with saxagliptin, a DPP4 inhibitor. *Cardiovasc Drugs Ther*. 2017;31:119.
149. Leng W, Wu M, Pan H, Lei X, Chen L, Wu Q, et al. The SGLT2 inhibitor dapagliflozin attenuates the activity of ROS-NLRP3 inflammasome axis in steatohepatitis with diabetes mellitus. *Ann Transl Med*. 2019;7:429.
150. Sabatino J, De RS, Tamme L, Iaconetti C, Sorrentino S, Polimeni A, et al. Empagliflozin prevents doxorubicin-induced myocardial dysfunction. *Cardiovasc Diabetol*. 2020;19:66.
151. Kalantar-Zadeh K, Jafar TH, Nitsch D, Neuen BL, Perkovic V. Chronic kidney disease. *Lancet*. 2021.
152. Nasser S, Vialichka V, Biesiekierska M, Balcerczyk A, Pirola L. Effects of ketogenic diet and ketone bodies on the cardiovascular system: concentration matters. *World J Diabetes*. 2020;11:584.
153. Rosenstock J, Ferrannini E. Euglycemic diabetic ketoacidosis: a predictable, detectable, and preventable safety concern with SGLT2 inhibitors. *Diabetes Care*. 2015;38:1638.
154. Bonora BM, Avogaro A, Fadini GP. Euglycemic ketoacidosis. *Curr Diab Rep*. 2020;20:25.
155. Scheen AJ. Sodium-glucose cotransporter type 2 inhibitors for the treatment of type 2 diabetes mellitus. *Nat Rev Endocrinol*. 2020;16:556.
156. Jain SK, McVie R. Hyperketonemia can increase lipid peroxidation and lower glutathione levels in human erythrocytes in vitro and in type 1 diabetic patients. *Diabetes*. 1999;48:1850.

Publisher's Note

Springer Nature remains neutral with regard to jurisdictional claims in published maps and institutional affiliations.

Ready to submit your research? Choose BMC and benefit from:

- fast, convenient online submission
- thorough peer review by experienced researchers in your field
- rapid publication on acceptance
- support for research data, including large and complex data types
- gold Open Access which fosters wider collaboration and increased citations
- maximum visibility for your research: over 100M website views per year

At BMC, research is always in progress.

Learn more biomedcentral.com/submissions

